



435

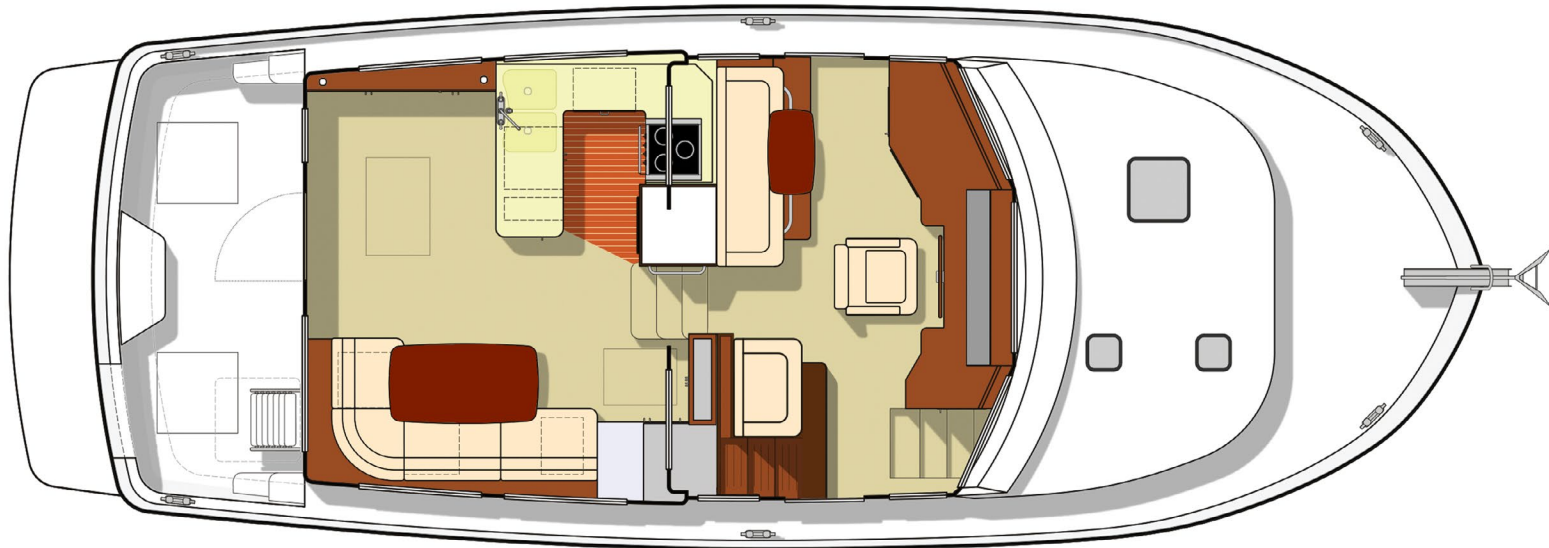




435



Pilothouse

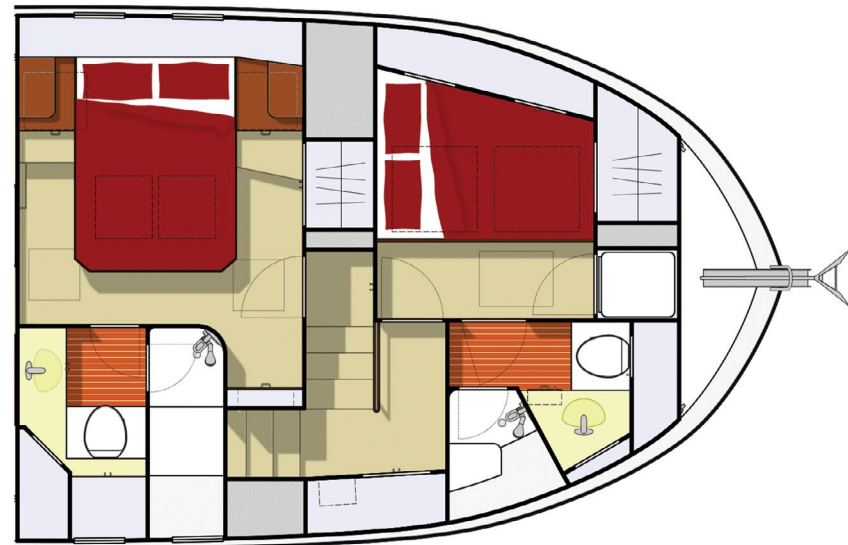


- POWER SINGLE CUMMINS QSC 500
- LOA 43'7"
- LWL 38'6"
- BEAM 15'10"
- DRAFT 4'10"
- DISP (dry) 29,200 lbs.
- DISP (wet) 35,360 lbs.
- FUEL 640 US GAL
- RANGE 1500 nm approx.
(varies with load and cruising conditions)
- WATER 200 US GAL
- WASTE 60 US GAL
- GREY 60 US GAL
- SLEEPS 4
(up to 7 with convertible settee and upper bunk options)

Optional Flybridge



Salon/Galley



Contact your local dealer for Standard and Optional Equipment
or visit our website at www.americantugs.com

Produced entirely by Tomco Marine Group, Inc.
LaConner, WA USA and shipped worldwide.